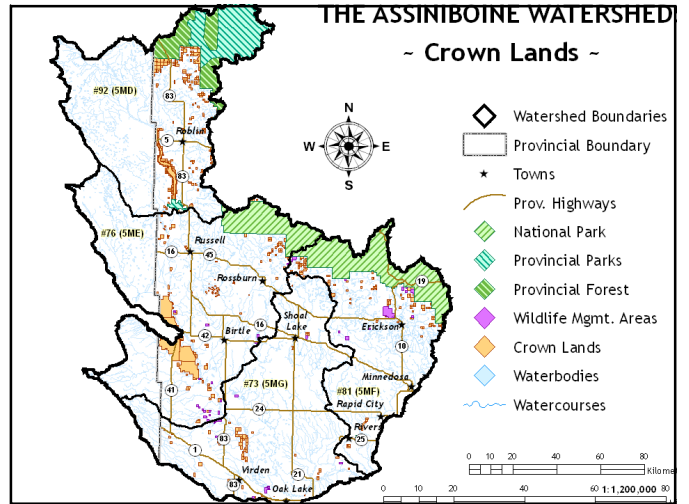


# Assiniboine Watersheds

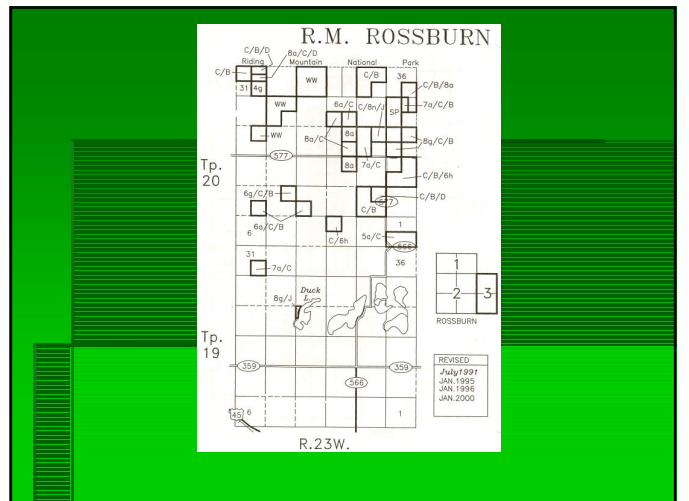
## Crown Lands

- Order- in- council
- Wildlife Management Areas
- Provincial Parks
- Provincial Forest
- Community Pasture
- Other crown



# Crown Lands

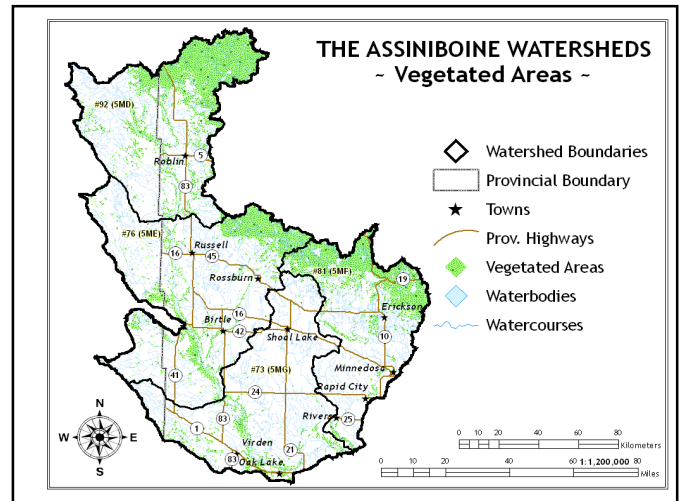
- Crown Land Classification System
  - Regional inter-departmental committee
  - Reviews crown land allocation and use, purchase applications





## Habitat Key wildlife / natural areas

- Wildlife Management Areas
- Provincial Parks
- National Park
- Crown Lands
- Private Lands



## Upland Wildlife Habitat Classification

Canada Land Inventory

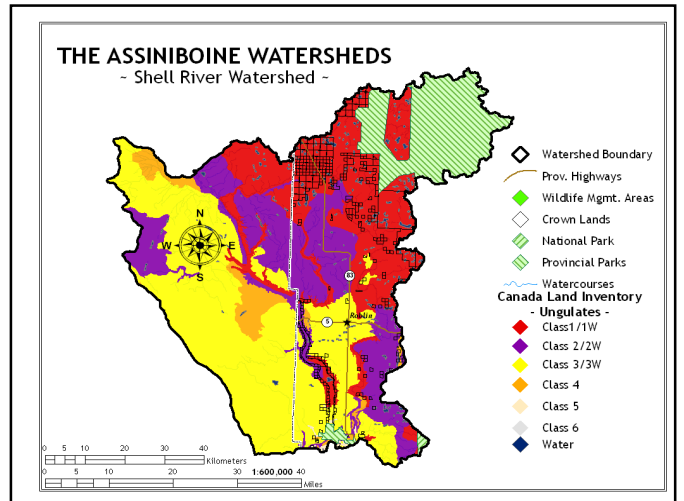
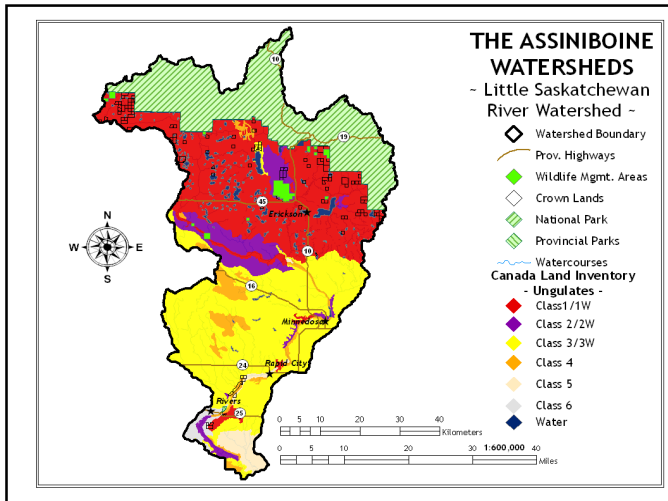
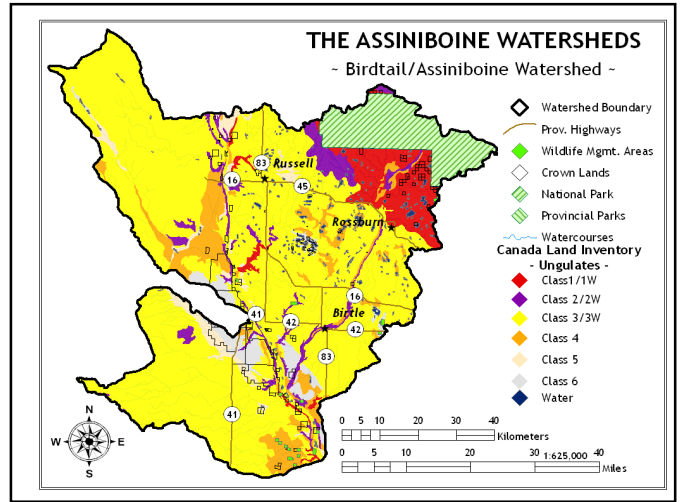
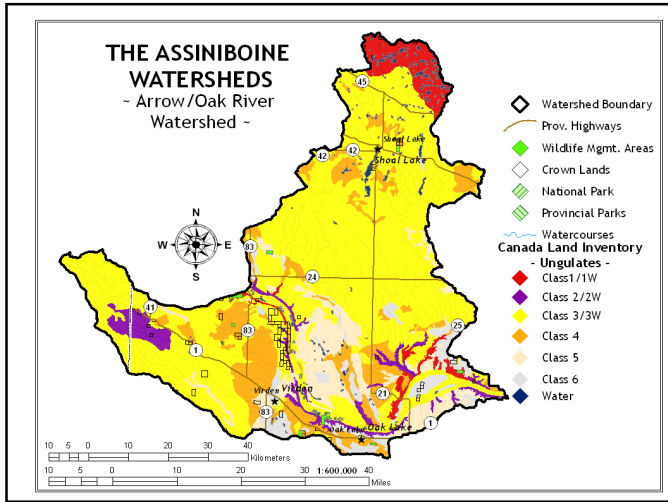
- **Land Capability Class Descriptions for Ungulate Wildlife Classes**  
The land is divided into areas on the basis of physiographic characteristics important to ungulate populations. The degree of limitation associated with each area determined its capability class.

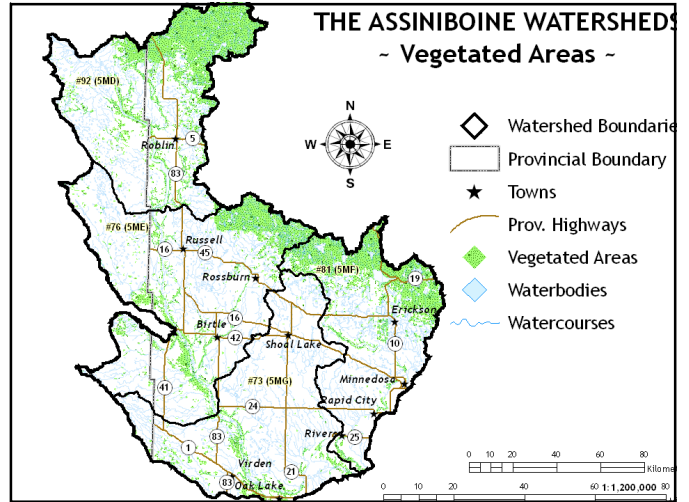
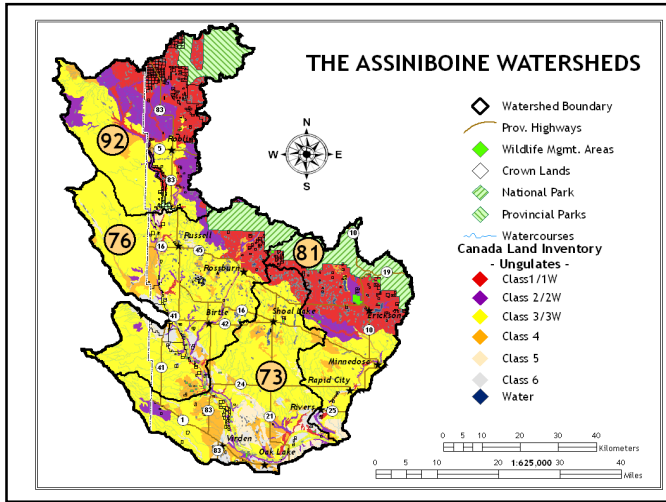
### Class Description

- 1 Lands in this class have no significant limitations to the production of ungulates.
- 1W Lands in this special class are Class 1 areas that are winter ranges on which animals from surrounding areas depend.
- 2 Lands in this class have very slight limitations to the production of ungulates.
- 2W Lands in this special class are Class 2 areas that are winter ranges on which animals from surrounding areas depend.

## CLI Classification (cont'd)

- 3 Lands in this class have slight limitations to the production of ungulates.
- 3W Lands in this special class are Class 3 areas that are winter ranges on which animals from surrounding areas depend.
- 4 Lands in this class have moderate limitations to the production of ungulates.
- 5 Lands in this class have moderately severe limitations to the production of ungulates.
- 6 Lands in this class have severe limitations to the production of ungulates.





## Biological diversity

- Variety of living organisms, genetic differences, communities and ecosystems in which they occur and the ecological process that keeps them functioning.

## Biological diversity

- Habitat loss and fragmentation is the most significant threat to biological diversity
- Air, water, soil, plants and animals all depend on biodiversity.
- Indicator species
- An ecosystem based management approach is necessary

